

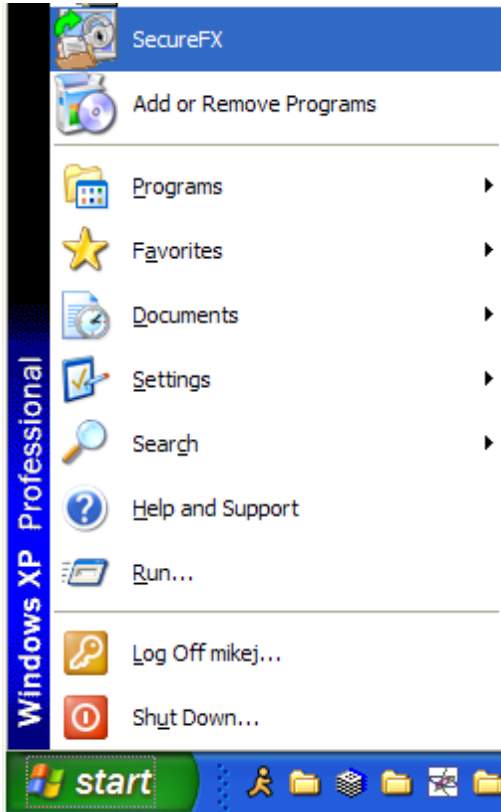


---

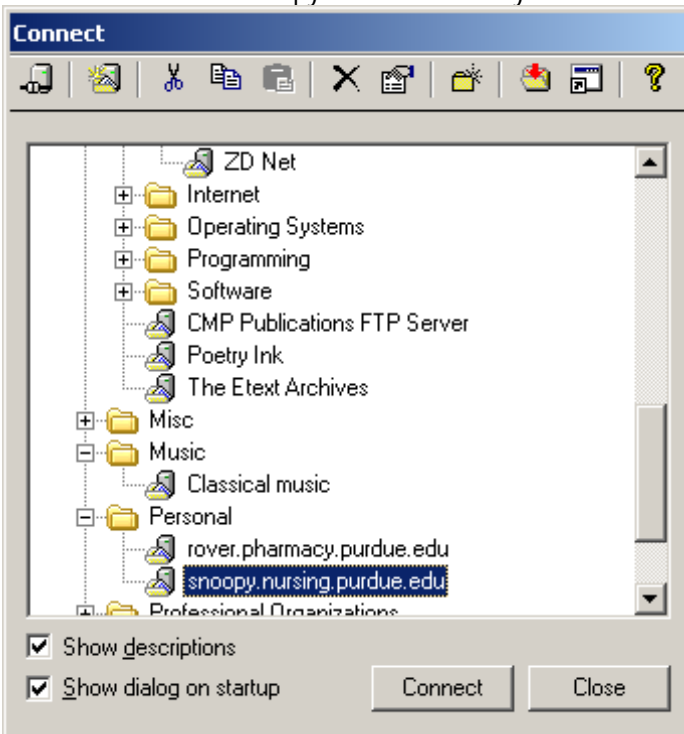
*Connecting to Snoopy (Nursing File Server) SecureFX to transfer files remotely. (Home Computers)*

---

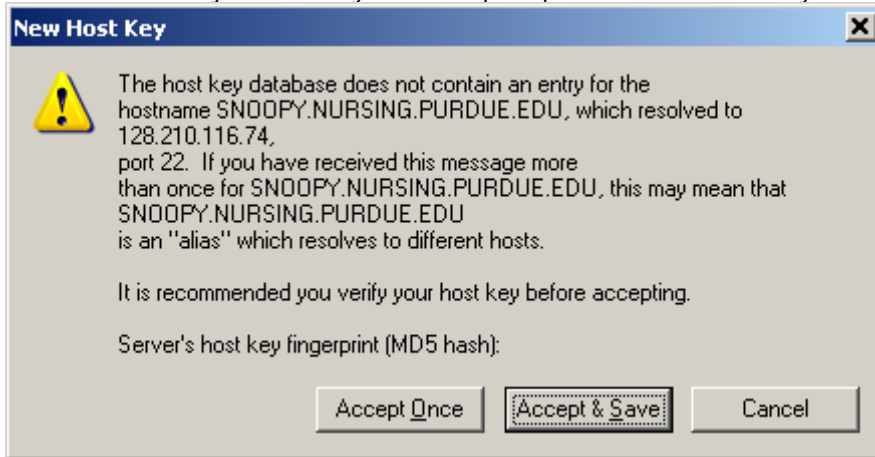
1. Click on the Start Menu. Then click on SecureFX: *Note: Your Start Menu will look different than this example.*



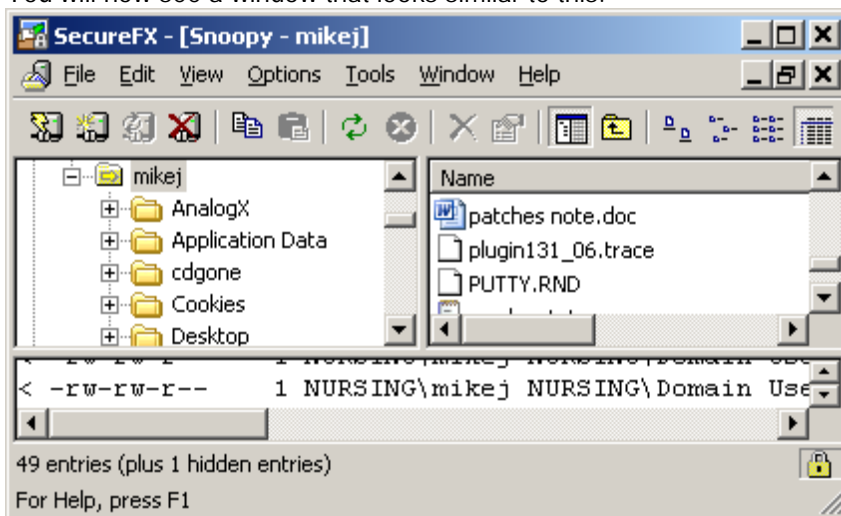
2. Double click on the Snoopy connection that you made during the installation.



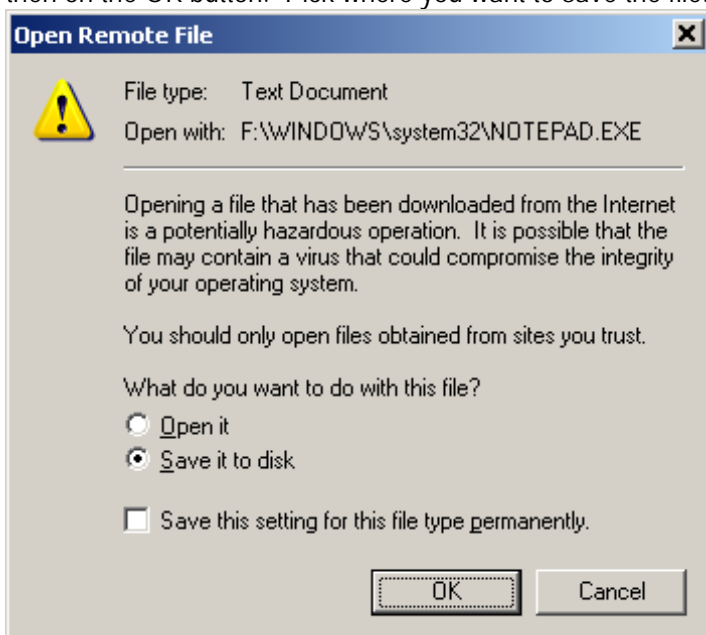
3. The FIRST TIME you do this, you will be prompted to save a host key. Click "Accept and Save".



4. You will now see a window that looks similar to this:



5. To download files (copy them to your computer), just double click on the file you want. Then click on Save it to disk and then on the OK button. Pick where you want to save the file.



6. To upload files (copy them to the server), just drag them from your computer to the SecureFX window. You will get a window that looks like this: Select Binary and click on OK. You might also want to click both checkboxes.

