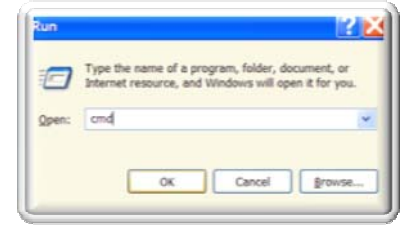




Remote Access to the PNHS File Server

NOTE: THESE INSTRUCTIONS ARE FOR WINDOWS 2000/XP/VISTA ONLY.

1. Create or open a VPN connection to ITaP's server. Specific instructions are available on ITaP's website: <http://www.itap.purdue.edu/connections/vpn/>. For support issues with the VPN, please contact ITaP directly by calling 49-44000 or e-mailing itap@purdue.edu.
2. Click on the Start button, then select run. Type "**cmd**" (without the quotes) in the open box. Click on the OK button. (See the example to the right.)
3. Type in these 2 commands: (Please note the space before each /persistent:no)



```
net use U: \\files.pnhs.purdue.edu\<username> /persistent:no
```


```
net use S: \\files.pnhs.purdue.edu\shared /persistent:no
```

- Replace **<username>** (including replacing the brackets) with the username you use when you log into your office computer.
- If you are prompted for a username to use to login to the server, use **ONEPURDUE**<username>****

4. **OPTIONAL** —If you wish to access your TLT (ITaP) home directory (H: drive in the labs, T: drive on your office/lab computer), please enter the following command: (Please note the space between your username and /persistent:no.)

```
net use T: \\offcampus.ics.purdue.edu\<username> /persistent:no
```

- Replace **<username>** (including replacing the brackets) with the username you use when you log into your office computer.
- If you are prompted for a username to use to login to the server, use **ONEPURDUE**<username>****

5. Type in **exit** and press the  key. You now have the same drives that you have at your on campus computer and they can be used the same way.